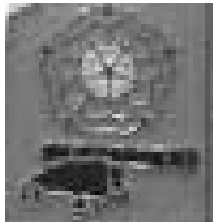


# WATA BOUTIT

— The newsletter of the Waterlooville Area Twinning Association. —

No 24      May 2008



WATERLOOVILLE



## 2008 TWINNING WEEKEND

Thank you to everyone for responding so quickly with your menu choices etc and for enclosing a cheque. This has made the job of your Committee a great deal easier.

You will find overleaf details and timings for the weekend—please make sure you keep this newsletter.

Also attached you will find a map showing the location of the Petersfield Golf Club. Do look at it in advance of your journey.

## AND FINALLY

Your Committee hope that you all have a wonderful weekend. If you encounter a problem do feel free to give one of the Committee a ring and we will try and help.

### Your Committee

Chairman	Glynnis Simcox	02392 254553
Secretary	Colin Monk	02392 258938
Treasurer	John Aspel	02392 251953
Members	Lorraine Boyes	02392 570774
	Helen Wright	02392 615346
	Bob Simcox	02392 254553

Please e-mail any items to [colin.monk2@ntlworld.com](mailto:colin.monk2@ntlworld.com) or post to 77 Durley Avenue, Cowplain, PO8 8TZ

## 2008 TWINNING WEEKEND—9th to 12th MAY

### ARRIVAL

We have heard from France that they hope to arrive in Waterlooville about 7pm English time on Friday 9th May. The coach will stop in the car park (next to the Iceland shop) in Maurepas Way. We have asked them to give us a phone call when they reach Guildford and we will then telephone those of you who have guests that are travelling on the coach.

### SATURDAY DAYTIME

Free time with families.

### SATURDAY EVENING MEAL

The meal is at the Petersfield Golf Club. We are suggesting an arrival time of 7.30pm for sitting down at 8pm. Attached to this newsletter is a map showing the location of the Golf Club. Further details can be found on the Golf Club website at [www.petersfieldgolfclub.co.uk](http://www.petersfieldgolfclub.co.uk)

### SUNDAY OUTING

The Sunday outing is to the Weald and Downland Museum. We are hoping for a fine day but if the weather looks like being bad we have an alternate indoor outing up our sleeves.

The Weald and Downland Museum is set in lovely surroundings and we would suggest that you take a picnic. However, there is a small restaurant there if you prefer that option.

To keep costs down we asked if some members would volunteer to take their cars. Thank you to all those who volunteered. We have therefore suggested the following:-

#### Members Travelling by Coach

Meet at the car park in Maurepas Way for a prompt 10am departure

Atterbury / Howard & guests, Rice-Oxley & guests, Norley & guests, Simcox & guests, Moss & guests, Wright & guests, Cornell & guests, Lindsay & guests, Philippe Provost, Serge Bouttier

#### Members Travelling by Car

Boyes & guests, Griffiths & guests, Handy & guests, Monk & guests, Smith & guests, Collins & guests.

We would suggest meeting in the museum car park at 10.45am. A map can be found at <http://www.wealddown.co.uk/>

We are anticipating leaving the museum around 4pm.

### SUNDAY EVENING

This is free time with families. We would suggest that members may like to get together with other members for a meal.

### MONDAY MORNING

As yet we do not know the departure time but based on previous experience we expect this to be 9am. As the car park in Maurepas Way will be busy at that time (and pay and display) we will try and find a different departure point. Full details will be given after the meal on Saturday evening.

### EMERGENCY CONTACT

If you have any problems give Colin a call on 07900400508

---